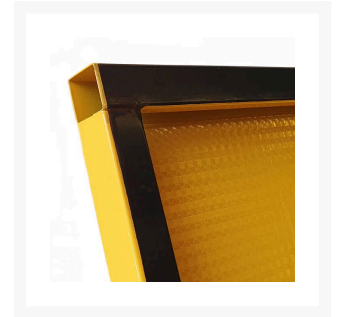
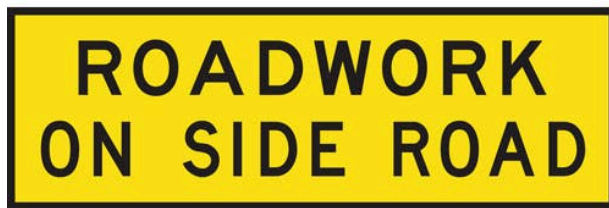


# Roadwork On Side Road - Boxed Edge Sign

## Product Images



## Description

- The Boxed Edge Sign design offers extra strength and added stability when used with a pair of Bi-pod legs.
- Manufactured from Colorbond Steel.
- Features Class 1 Reflective Surface.
- **Team this sign with either the [Bi-Pod Folding](#) or [Bi-Pod Fixed](#) legs sold separately.**

## Additional Information

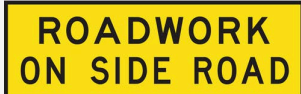
---

MUTCD Sign Number

T1-25

## Products in this set

---

A rectangular sign with a yellow background and a black border. The text "ROADWORK ON SIDE ROAD" is written in bold, black, uppercase letters, centered on the sign.

**ROADWORK  
ON SIDE ROAD**

**Roadwork On Side Road (1800 x 600mm) - Boxed Edge  
Sign**