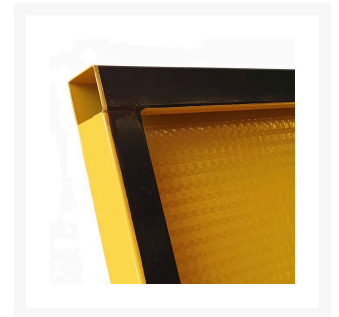


# Stock Ahead - Boxed Edge Sign

## Product Images



## Description

- The Boxed Edge Sign design offers extra strength and added stability when used with a pair of Bi-pod legs.
- Manufactured from Colorbond Steel.
- Features Class 1 Reflective Surface.
- Team this sign with either the Bi-Pod Folding or Bi-Pod Fixed legs sold separately.

## Additional Information

MUTCD Sign Number

T1-19

## Products in this set

---



**Stock Ahead (900 x 600mm) - Boxed Edge Sign**