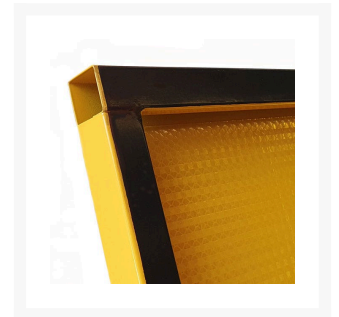


# Workers Ahead - Boxed Edge Sign

## Product Images



## Description

- The Boxed Edge Sign design offers extra strength and added stability when used with a pair of Bi-pod legs.
- Manufactured from Colorbond Steel.
- Features Class 1 Reflective Surface.
- **Team this sign with either the [Bi-Pod Folding](#) or [Bi-Pod Fixed](#) legs sold separately.**

## Additional Information

MUTCD Sign Number

T1-5

## Products in this set

---



**900 x 600mm Workers Ahead - Boxed Edge Sign**



**1200 x 900mm Workers Ahead - Boxed Edge Sign**