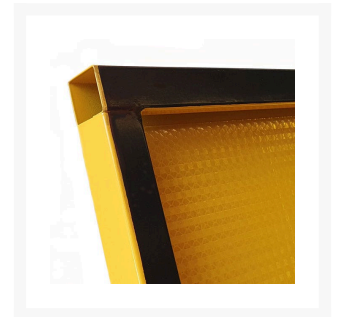
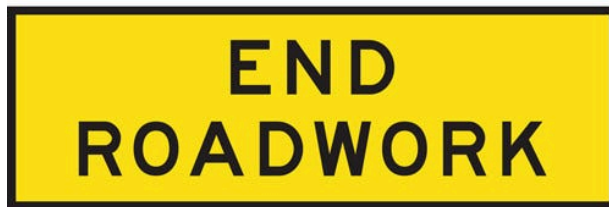


End Roadwork - Boxed Edge Sign

Product Images



Description

- The Boxed Edge Sign design offers extra strength and added stability when used with a pair of Bi-pod legs.
- Manufactured from Colorbond Steel.
- Features Class 1 Reflective Surface.
- **Team this sign with either the [Bi-Pod Folding](#) or [Bi-Pod Fixed](#) legs sold separately.**

Additional Information

MUTCD Sign Number	T2-16
Traffic Sign Material	Colorbond Steel Class 1 Reflective
Traffic Sign Size	1800mm x 600mm