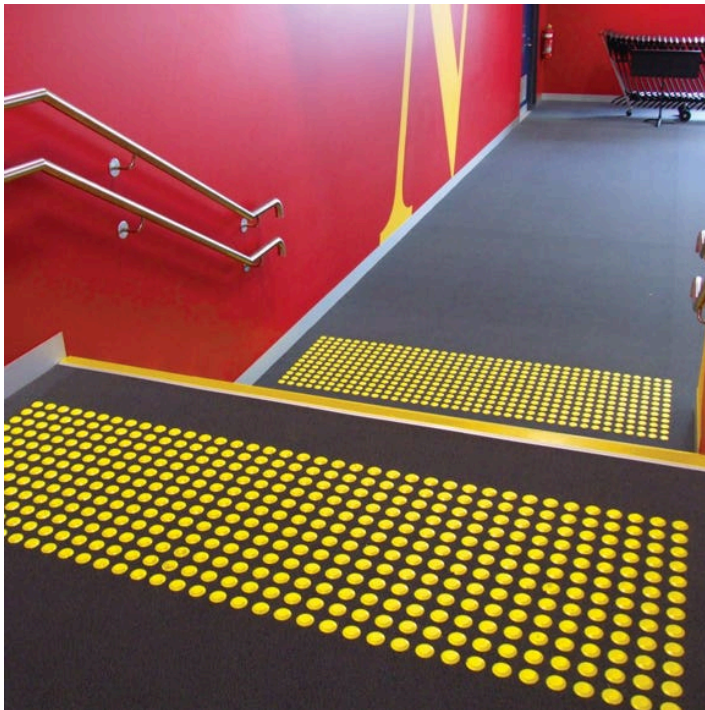


PolyStud® Tactiles

Product Images

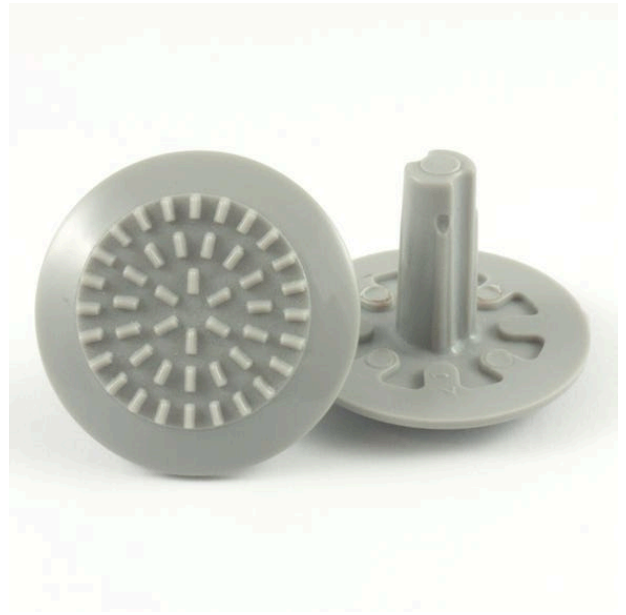


PolyStud Hazard Indicators



PolyStud Directional Indicators







Description

PolyStud® Plastic Tactile Indicators are engineered and purpose-built tough to withstand extreme point loading and side-impact, even over asphalt. The unique formulation and large anchoring spigot not only ensures the product is made to last, it also protects the substrate from any possibility of damage.

- PolyStud® Tactile Indicators are long-lasting, resistant to heavy traffic abuse and maintenance machinery.
- Safety is the most important criteria when selecting a plastic tactile Indicator. PolyStud® is designed to provide long term anti-slip safety.
- With an anti-slip rating of R11, it is one of the best performing plastic tactile indicators on the market. Ask your representative for our independent slip resistance report.
- PolyStud® is manufactured from a blend of new generation polymers to ensure long-lasting, UV stable performance in Australia's extreme climatic conditions.

- **Easy to install - No time-wasting, instant commissioning.**
- The PolyStud® anchoring spigot is designed to deform and lock when driven into a cavity. This creates a positive, strong and efficient means of mechanically fixing the tactile indicator to almost any surface.
- There is **no requirement for adhesive**, which means your installation is ready to walk on in minutes.
- PolyStud® is ideal for public transport and other high traffic areas.
- With just 2 easy steps i.e. drill a hole and lock in a Tactile indicator, your installation is complete — and best of all, you can do-it-yourself. PolyStud Tactile Indicators can be installed over concrete, bitumen, natural stone, ceramic tiles, pavers, timber, carpet and most other surfaces.

Quantity required:

- **(Hazard) per Square Metre: 400qty/m2**
- **(Directional) per Square Metre: 45qty/m2**
- **(Hazard) per Lineal Metre at 600mm wide: 240qty/lm**

Product Options

Stair Nosing Tactile Colour:	Black
	Grey
	Ivory
	Ocean Blue
	Orange
	Terracotta
	Yellow
Tactile Type:	Hazard Indicator
	Directional Indicator