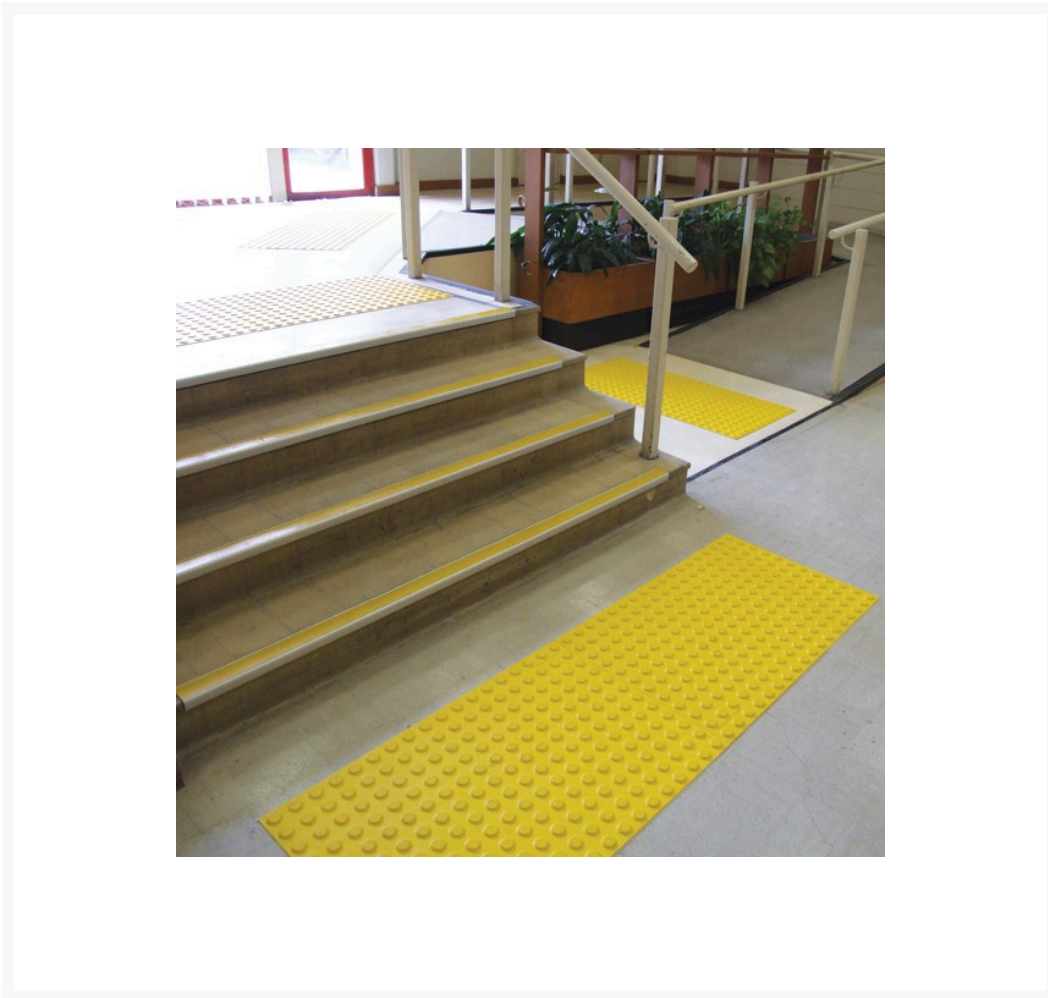


# PolyTile Tactiles

## Product Images





## Description

---

PolyTile Tactiles are an effective way of providing guidance cues and make conforming with the Disability Discrimination Act (DDA) easy and fuss-free. PolyTile is supplied with a super-strong PSA peel and stick backing and can be installed internally to provide a quick and cost-effective means of conforming to the Australian standards and National Construction Code requirements.

- **300 x 300mm Peel & Stick Indoor Tactile Tile.**
- Fast, easy installation, DIY, no special technical skills
- No downtime, installation can be walked on immediately
- Low-cost effective supply/instal
- Available in 4 colours, ivory, yellow, black, terracotta and are R12 safety rated.
- Will not discolour, crack or degrade over time.
- Manufactured from strong, durable polyurethane polymer which has a greater wear resistance than steel.
- Provides a flexible, hardwearing and long-lasting tactile that is suitable for extreme high-traffic installations such as in the transport and education sectors.

### Quantity required:

- **Per Square Metre: 11.11qty/m<sup>2</sup>**
- **Per Lineal Metre at 600mm wide: 6.66qty/lm**

## Product Options

---

Stair Nosing Tactile Colour:

Black

Ivory

Terracotta

Yellow