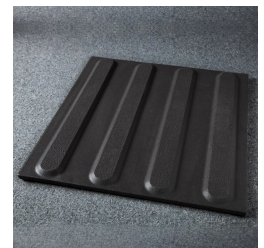
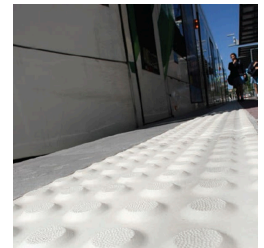


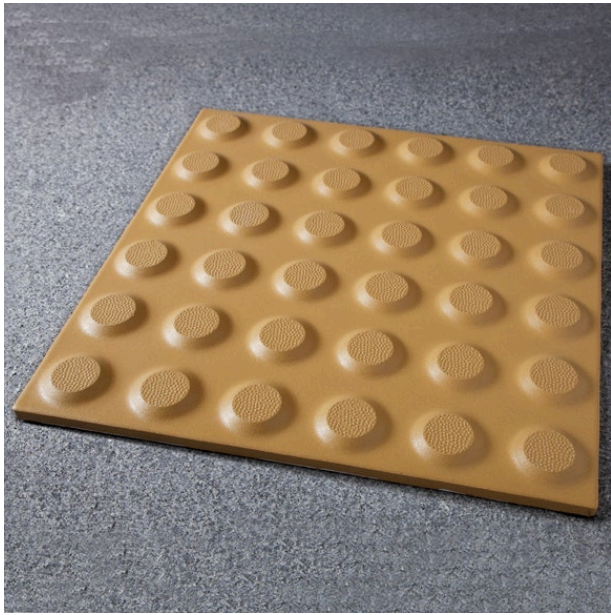
# CobbleTac Porcelain Tactiles

## Product Images









## Description

---

Designed for access and mobility— means to assist the orientation of people with vision impairment—tactile ground surface indicators, in both hazard and directional profiles. Porcelain Tactiles are appropriate for both internal and external applications such as bus stops, pedestrian crossings, stairs and ramps.

- Porcelain Tactiles are available in 4 colours to meet the 30% luminance contrast requirements of the Australian Standard AS1428: 2009.
- The Tactiles are manufactured in tough porcelain to provide a cost-competitive permanent solution.
- Warranted against manufacturing faults for a period of 10 years when installed to the manufacturer's installation instructions.
- These porcelain Tactiles are UV Stable and have been designed and tested in Australia's extreme climatic conditions.
- Porcelain Tactiles will retain colour contrast, will not absorb moisture and will remain dimensionally stable for the life of the product.
- Easy to install using standard industry methods.
- **300 x 300mm format with a 10mm base and 5mm tactile stud height.**
- For external or internal use.
- Use on concrete, bitumen, tiled or paved surfaces and with most substrates that can be recessed.
- Ideal for high traffic areas, ramps, stairs, bus and tram stops, train platforms and pedestrian crossings.
- **Please note, 1 single Tactile purchase includes 11 tiles.**

### Quantity required:

- **Per Square Metre: 11.11qty/m<sup>2</sup>**
- **Per Lineal Metre at 600mm wide: 6.66qty/lm**

# Product Options

Stair Nosing Tactile Colour:	Black
	Grey
	Ivory
	Yellow
Tactile Type:	Hazard Indicator
	Directional Indicator