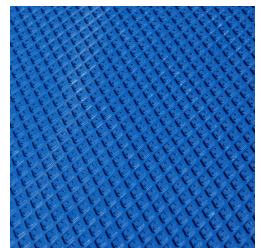
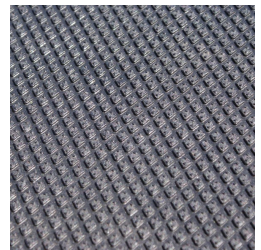
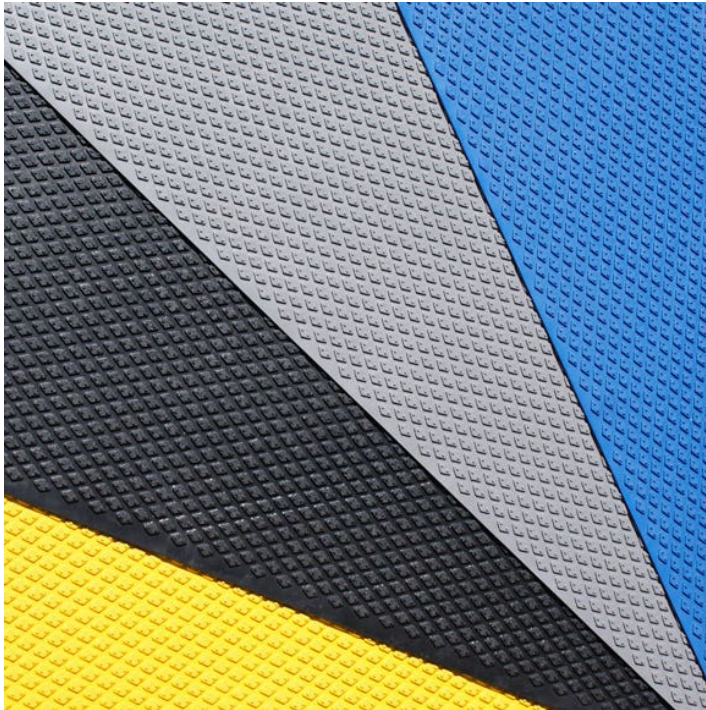
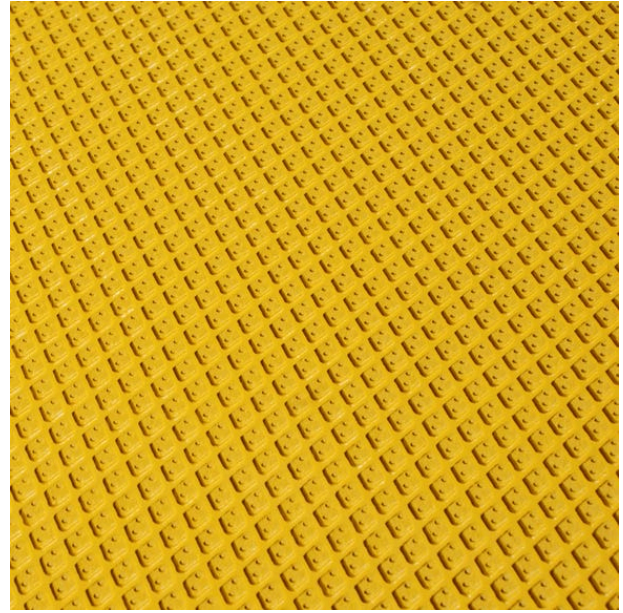
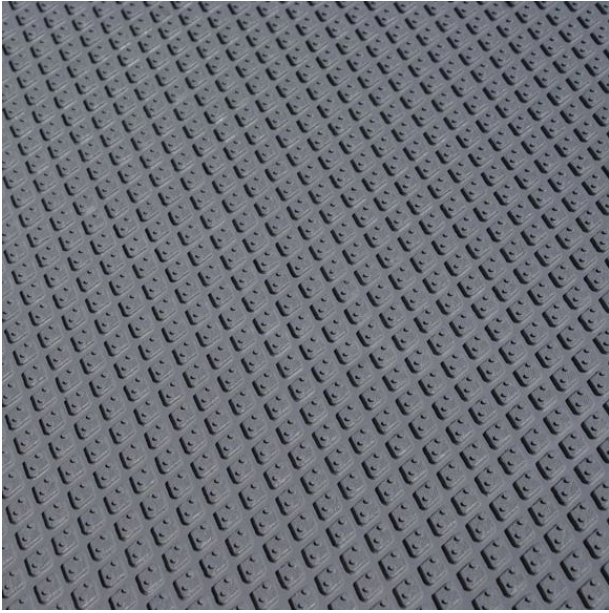


Fordex Marine Flooring

Product Images





Description

Fordex marine grade safety flooring has a durable, attractive surface. Fordex provides optimum performance in applications requiring a high level of anti-slip, such as walkways, stairways, internal/external ramps, pontoon, marine decking, swimming pool surrounds, houseboats and most other excessively wet areas.

- **Fordex Marine Floor Dimensions: 1000mm x 1000mm x 3.2mm.**
- Consists of diamond-shaped nodules that improve grip even in the most challenging of marine conditions.
- Surface nodules channel water away, reducing dangerous & unsightly pooling.
- Available in 4 attractive colours to meet the aesthetic requirements of most internal and external applications, including grey, black, ocean blue and safety yellow.
- The flooring is manufactured from a unique blend of polymers to deliver optimum UV stability and wear resistance without compromising other physical properties.
- It also contains a built-in fungicide to prevent bacterial growth that can sometimes lead to unsightly stains.
- Exhibits excellent resistance to chemicals typically used in marine environments such as fuel, grease, chlorine and salt.
- A combination of specialized polymers and surface profile design delivers a high co-efficiency of friction in both wet & dry conditions.
- Rated R12 for optimum safety and **conformance with the Australian/New Zealand Standards for anti-slip AS4586:2004**, Slip resistance classification of new pedestrian surface materials.
- Custom colours are also available on request, subject to quantity.
- **An adhesive such as [Mapei 2 Part Adhesive](#) is required for application.**

Product Options

Stair Nosing Tactile Colour:	Black
	Blue
	Grey
	Yellow