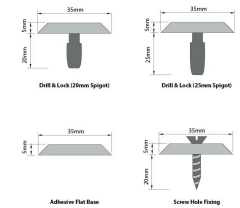
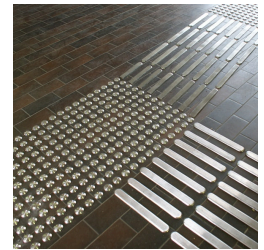
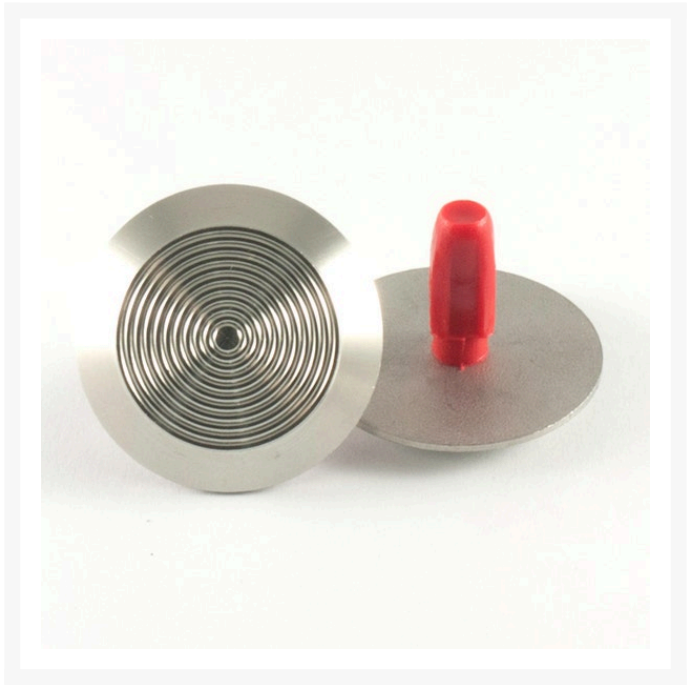


SureSteel Tactile Indicators

Product Images







Description

Stainless steel tactile indicators are manufactured from a solid piece of 316 stainless steel, so the tactile head will never detach from the anchoring spigot.

- SureSteel tactile indicators are designed to meet all aspects of the Australian Standard AS1428—2009 Design for access and mobility—Means to assist the orientation of people with vision impairment—Tactile ground surface indicators, including the minimum luminance contrast and anti-slip requirements.
- They are also processed with the utmost care to ensure your stainless steel studs look great and last the test of time.
- **Choose from 3 basic styles**, all with either a smooth or stepped side face and with or without a fixing spigot, including; Concentric ring top surface or Grit in-filled top surface.
- SureSteel tactile indicators are all R13 anti-slip rated, so you can rest assured your tactile installation is

safe with the highest possible level of anti-slip.

- Concentric ring and grit in-filled stainless steel tactile indicators, in either the smooth or stepped side face, exceed the slip resistance guide-lines HB197.1999 for external ramps, walkways, pedestrian crossings and all requirements of the National Construction Code.
- Drill&Lock fixing system is a patented method of installation that eliminates the need for adhesive and often expensive specialist installation technicians.
- With just 2 easy steps i.e. drill a hole and lock in a tactile indicator, your installation is complete and best of all, you can do-it-yourself with our DIY Installation kit.
- SureSteel tactile indicators can be installed over concrete, bitumen, natural stone, ceramic tiles, pavers, timber, carpet and most other surfaces.
- **Note: All Flat Base/Adhesive Tactiles require adhesive for installation - sold separately.**
- Bronson Safety manufactures a complete range of interlocking templates to ensure your installation conforms to the Australian/New Zealand Standards.
- **Tactile Size: Width 5mm x Length 35mm**

Quantity required:

- **(Hazard) per Square Metre: 400qty/m²**
- **(Directional) per Square Metre: 45qty/m²**
- **(Hazard) per Lineal Metre at 600mm wide: 240qty/lm**

Note: If you are installing, Bronson Safety can provide all the required technical support. Please contact us.

Product Options

Stair Nosing Tactile Colour:	Black
	Stainless Steel
	Yellow
Tactile Type:	Hazard Indicator
	Directional Indicator
Tactile Fixing:	Adhesive (Flat Base)
	Drill & Lock (20mm Spigot)
	Drill & Lock (25mm Spigot)
	Screw Hole
Tactile Style:	Carborundum In-fill
	Concentric Ring
	Crosshatch
	Poly In-fill
Tactile Side Pattern:	Smooth
	Stepped