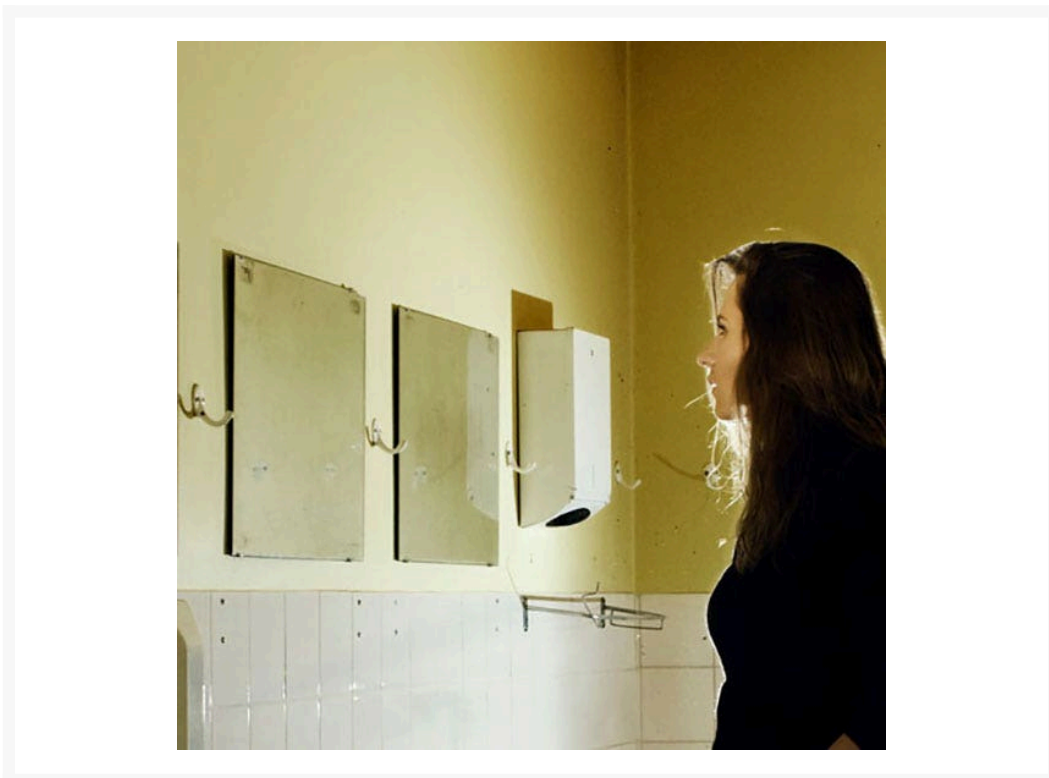


# Safety Mirror Flat 400mm x 800mm Acrylic

## Product Images



## Description

These new Crystal View™ flat acrylic mirrors are perfect for any industrial application where **accurate depth perception is required**. For example, where employees need a clear, undistorted view of themselves and/or their working environment.

Guarantee that your employees are able to check for appropriate PPE, and workwear before they enter the work area. For example hard hats and other head protection in a warehouse or construction site; or hairnets and aprons in food processing environments.

- Specially formulated from industrial acrylic so there is **no danger of broken glass**.
- All mirror edges are trimmed and covered to eliminate sharp edges.
- Mirrors can be **fixed to doors, walls and other flat surfaces** using glue or double-sided tape.

## Additional Information

---

Brand	Crystal View™
Mirror Application	Specialty
Mirror Material	Acrylic
Mirror Size	300mm